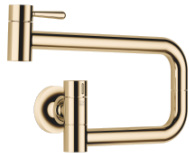









30 805 809



- 500mm projection
- pivoting spout
- laminar flow
- cold water only
- max. flow 5.7 l/min at 3 bar flow pressure
- min. recess depth 125 mm
- max. recess depth 80 mm
- lead-free
- This product can help a building meet the requirements of Green Building Rating Systems, e.g. LEED®, BREEAM®, DGNB

	Durabron (23kt Gold)	30 805 809-09
	Chrome	30 805 809-00
	Brushed Platinum	30 805 809-06
	Platinum	30 805 809-08
	Dark Chrome	30 805 809-19
	Brushed Durabron (23kt Gold)	30 805 809-28
	Brushed Champagne (22kt Gold)	30 805 809-46
	Champagne (22kt Gold)	30 805 809-47
	Brushed Chrome	30 805 809-93
	Brushed Dark Platinum	30 805 809-99

Required miscellaneous

**POT FILLER Concealed wall elbow** 35 087 970 90



- min. recess depth 80 mm
- max. recess depth 125 mm

30 805 809

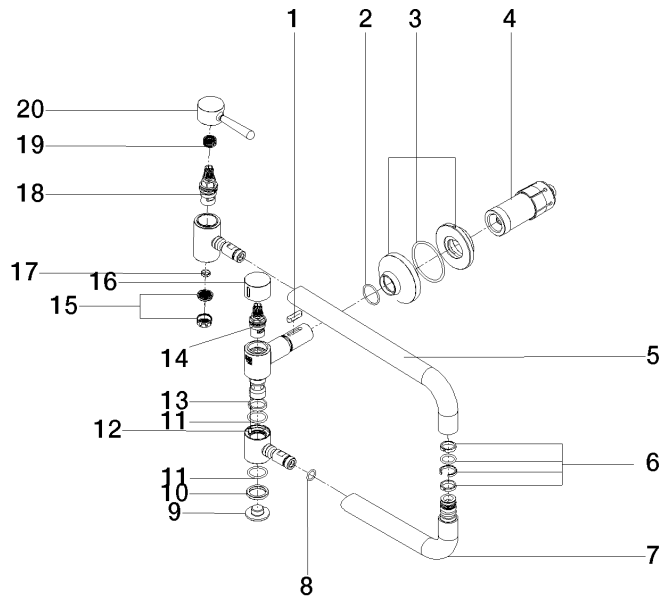
Flow rate chart



Certificates

LGA\_29748.

30 805 809





## VAIA POT FILLER Cold-water valve - Durabronz (23kt Gold)

VAIA

30 805 809

### Spare parts list

No.	Item Number	Name	Quantity used	Delivery time
1	90 16 04 001 00 90	spring	1	2
2	90 14 10 063 00 90	seal	1	2
3	90 27 87 039 00-09	rosette	1	40
4	90 30 01 213 00 90	connection	1	2
5	09 28 22 208-09	pipe	1	40
6	90 28 10 199 00 90	gasket kit	1	10
7	04 28 22 221 10-09	pipe	1	40
8	90 14 10 077 00 90	seal	2	2
9	09 21 02 028-09	lid	1	40
10	09 28 10 139 90	ring	1	2
11	09 14 10 015 90	seal	2	2
12	09 31 11 109 90	pin	1	2
13	09 28 10 136 90	ring	1	2
14	90 90 03 171 00 90	top	1	2
15	09 29 03 089 90	aerator	1	60
16	09 20 62 025-09	handle	1	40
17	09 14 05 002 90	seal	1	2
18	90 90 03 146 00 90	top	1	2
19	90 12 12 232 00 90	fixing cap	1	2
20	90 20 80 051 00-09	handle	1	-

Spare part can no longer be ordered, please order the replacement item